

PART OF THE SE 1/4, SEC. 16, T.5N., R.1W., S.L.B. & M.
PARKVIEW SUBDIVISION

IN SOUTH OGDEN CITY

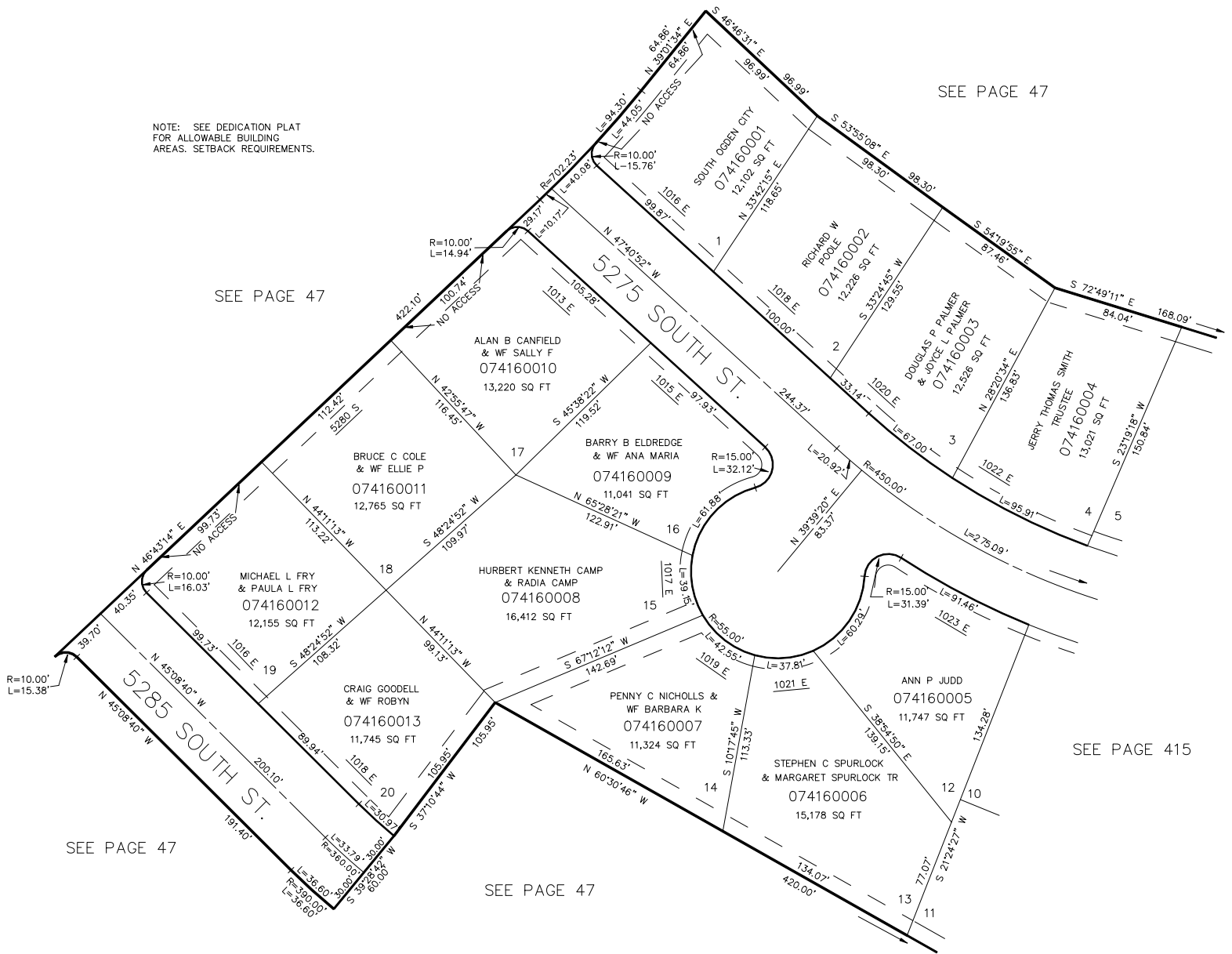
SCALE 1" = 50'

TAXING UNIT: 27

NOTE: SEE DEDICATION PLAT FOR ALLOWABLE BUILDING AREAS. SETBACK REQUIREMENTS.

SEE PAGE 47

SEE PAGE 47



SEE PAGE 47

SEE PAGE 47

SEE PAGE 415

10' UTILITY EASEMENTS ON REAR & SIDES OF LOTS; 7' EASEMENTS ALONG FRONTS OF LOTS AS INDICATED BY DASHED LINES. ALL EASEMENTS TO BE USED FOR ALL PUBLIC UTILITIES.

FOR COMPLETE ENG DATA SEE ORIGINAL DEDICATION PLAT IN BOOK 34, PAGE 94 OF RECORDS.